



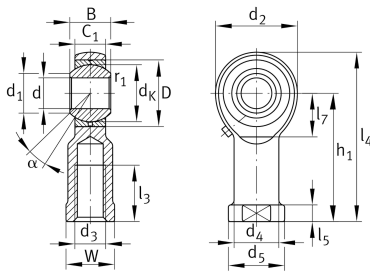
GIKR10-PB-A

Rod end

Schaeffler ID:
0066349740000

Rod end with internal thread, right hand thread, requiring maintenance, DIN ISO 12240-4. dimension series K, type F, open design

Technical information



Main Dimensions & Performance Data

d	10 mm	Bore diameter bearing
D	22 mm	Outside diameter bearing
B	14 mm	Width inner ring
C _r	10,000 N	Basic dynamic load rating, radial
C _{0r}	18,500 N	Basic static load rating, radial
G _r	0 - 0,035 mm	Radial Clearance
	79.567 g	Weight

Dimensions

d _K	19.05 mm	Ball diameter
d ₁	12.9 mm	Outer flange diameter inner ring
d ₂	28 mm	Outer eye diameter
d ₃	M10	Thread size
d ₄	15 mm	Shank diameter
h ₁	43 mm	Shank Length Internal thread head
α	13 °	Tilt angle
l ₃	20 mm	Thread length Internal thread
l ₄	57 mm	Total length internal thread head
l ₅	6.6 mm	length rod end shank
l ₇	15 mm	Distance drilling with/shaft start
d ₅	19 mm	Shank diameter, large
C ₁	10.5 mm	Width of the rod end
r _{1smin}	0.3 mm	Edge Spacing
W	17 mm	Width Across Flat
d _{OT}	0.015 mm	Bore diameter bearing, upper tolerance
d _{UT}	0 mm	Bore diameter bearing, lower tolerance
d _T	H7 mm	Bore diameter bearing, tolerance
B _{OT}	0 mm	Width inner ring, upper tolerance
B _{UT}	-0.12 mm	Width inner ring, lower tolerance

Temperature range

T _{min}	-60 °C	Operating temperature min.
T _{max}	250 °C	Operating temperature max.